

Urban Travel

2022

VINTAGE

20oz double wall stainless steel bottle.

- double wall stainless steel can keep hot 6 hours and cold for 24 hours.
- screw open and close lid convenience for daily use.
- made from high quality food grade 304 stainless steel that is rust proofed , sturdy, durable and anti-scratching. It is suitable for any occasions like hiking, cycling, camping, gym, car, office or home.
- the deep groove seal inside with a BPA FREE plastic O-ring ensures this bottle to remain leak-proof.



Item Nr : SS-759
Capacity : 20oz 600ml



Item Nr : SS-758
Capacity : 16oz 480ml



VINTAGE

16oz double wall stainless steel bottle.

- double wall stainless steel can keep hot 6 hours and cold for 24 hours.
- screw open and close lid convenience for daily use.
- made from high quality food grade 304 stainless steel that is rust proofed , sturdy, durable and anti-scratching. It is suitable for any occasions like hiking, cycling, camping, gym, car, office or home.
- the deep groove seal inside with a BPA FREE plastic O-ring ensures this bottle to remain leak-proof.

HANGER

23oz double wall stainless steel tumbler.

- double wall stainless steel can keep hot 6 hours and cold for 24 hours.
- slider open and close lid convenience for daily use.
- made from high quality food grade 304 stainless steel that is rust proofed , sturdy, durable and anti-scratching. It is suitable for any occasions like hiking, cycling, camping, gym, car, office or home.
- the deep groove seal inside with a BPA FREE plastic O-ring ensures this bottle to remain leak-proof.



Item Nr : SS-773
Capacity : 23oz 690ml



Item Nr : SS-553
Capacity : 19.5oz 556ml



CHILLE

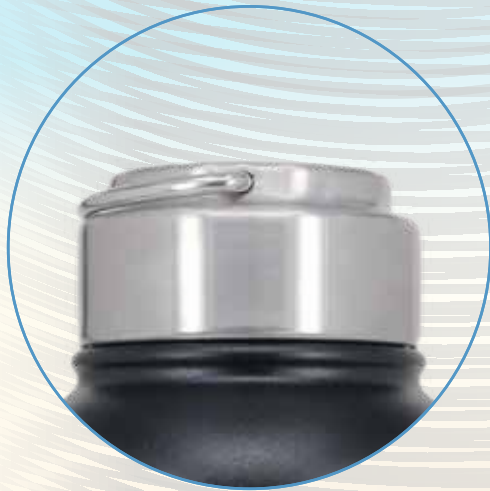
19.5oz double wall stainless steel tumbler.

- double wall stainless steel can keep hot 6 hours and cold for 24 hours.
- slider open and close lid convenience for daily use.
- made from high quality food grade 304 stainless steel that is rust proofed , sturdy, durable and anti-scratching. It is suitable for any occasions like hiking, cycling, camping, gym, car, office or home.
- the deep groove seal inside with a BPA FREE plastic O-ring ensures this bottle to remain leak-proof.

CARRY

24oz double wall stainless steel bottle.

- double wall stainless steel can keep hot 6 hours and cold for 24 hours.
- screw open and close lid convenience for daily use.
- made from high quality food grade 304 stainless steel that is rust proofed, sturdy, durable and anti-scratching. It is suitable for any occasions like hiking, cycling, camping, gym, car, office or home.
- the deep groove seal inside with a BPA FREE plastic O-ring ensures this bottle to remain leak-proof.



Item Nr : SS-755
Capacity : 24oz 720ml



Item Nr : SS-755
Capacity : 32oz 960ml

CARRY

32oz double wall stainless steel bottle.

- double wall stainless steel can keep hot 6 hours and cold for 24 hours.
- screw open and close lid convenience for daily use.
- made from high quality food grade 304 stainless steel that is rust proofed , sturdy, durable and anti-scratching. It is suitable for any occasions like hiking, cycling, camping, gym, car, office or home.
- the deep groove seal inside with a BPA FREE plastic O-ring ensures this bottle to remain leak-proof.

QUICK

24oz double wall stainless steel bottle.

- double wall stainless steel can keep hot 6 hours and cold for 24 hours.
- screw open and close lid convenience for daily use.
- made from high quality food grade 304 stainless steel that is rust proofed , sturdy, durable and anti-scratching. It is suitable for any occasions like hiking, cycling, camping, gym, car, office or home.
- the deep groove seal inside with a BPA FREE plastic O-ring ensures this bottle to remain leak-proof.



SS-650
24oz , 720ml



SS-663
25oz 740ml



SS-649
17oz , 510ml



Item Nr : SS-705
Capacity : 18oz 530ml

PUSAN

18oz double wall stainless steel bottle.

- double wall stainless steel can keep hot 6 hours and cold for 24 hours.
- screw open and close lid convenience for daily use.
- made from high quality food grade 304 stainless steel that is rust proofed , sturdy, durable and anti-scratching. It is suitable for any occasions like hiking, cycling, camping, gym, car, office or home.
- the deep groove seal inside with a BPA FREE plastic O-ring ensures this bottle to remain leak-proof.

SOLO

12oz double wall stainless steel bottle.

- double wall stainless steel can keep hot 6 hours and cold for 24 hours.
- screw open and close lid convenience for daily use.
- made from high quality food grade 304 stainless steel that is rust proofed , sturdy, durable and anti-scratching. It is suitable for any occasions like hiking, cycling, camping, gym, car, office or home.
- the deep groove seal inside with a BPA FREE plastic O-ring ensures this bottle to remain leak-proof.



SS-502
12oz 360ml



SS-698
18oz 530ml



Item Nr : SS-661
Capacity : 17oz 510ml

SQUARE

17oz double wall stainless steel bottle.

- double wall stainless steel can keep hot 6 hours and cold for 24 hours.
- screw open and close lid convenience for daily use.
- made from high quality food grade 304 stainless steel that is rust proofed , sturdy, durable and anti-scratching. It is suitable for any occasions like hiking, cycling, camping, gym, car, office or home.
- the deep groove seal inside with a BPA FREE plastic O-ring ensures this bottle to remain leak-proof.

MERIT

29oz double wall stainless steel bottle.

- double wall stainless steel can keep hot 6 hours and cold for 24 hours.
- screw open and close lid convenience for daily use.
- made from high quality food grade 304 stainless steel that is rust proofed , sturdy, durable and anti-scratching. It is suitable for any occasions like hiking, cycling, camping, gym, car, office or home.
- the deep groove seal inside with a BPA FREE plastic O-ring ensures this bottle to remain leak-proof.



SS-467
29oz 870ml



SS-468
29oz 870ml



Item Nr : SS-469
Capacity : 27oz 810ml

MERITOCRATIC

27oz double wall stainless steel bottle.

- double wall stainless steel can keep hot 6 hours and cold for 24 hours.
- screw open and close lid convenience for daily use.
- made from high quality food grade 304 stainless steel that is rust proofed , sturdy, durable and anti-scratching. It is suitable for any occasions like hiking, cycling, camping, gym, car, office or home.
- the deep groove seal inside with a BPA FREE plastic O-ring ensures this bottle to remain leak-proof.

MARA

19oz double wall stainless steel bottle.

- double wall stainless steel can keep hot 6 hours and cold for 24 hours.
- screw open and close lid convenience for daily use.
- made from high quality food grade 304 stainless steel that is rust proofed , sturdy, durable and anti-scratching. It is suitable for any occasions like hiking, cycling, camping, gym, car, office or home.
- the deep groove seal inside with a BPA FREE plastic O-ring ensures this bottle to remain leak-proof.



Item Nr : SS-454
Capacity : 19oz 570ml



Item Nr : SS-465
Capacity : 18oz 540ml

MERCY

18oz double wall stainless steel bottle.

- double wall stainless steel can keep hot 6 hours and cold for 24 hours.
- screw open and close lid convenience for daily use.
- made from high quality food grade 304 stainless steel that is rust proofed , sturdy, durable and anti-scratching. It is suitable for any occasions like hiking, cycling, camping, gym, car, office or home.
- the deep groove seal inside with a BPA FREE plastic O-ring ensures this bottle to remain leak-proof.

MMC

18oz double wall stainless steel bottle.

- double wall stainless steel can keep hot 6 hours and cold for 24 hours.
- screw open and close lid convenience for daily use.
- made from high quality food grade 304 stainless steel that is rust proofed , sturdy, durable and anti-scratching. It is suitable for any occasions like hiking, cycling, camping, gym, car, office or home.
- the deep groove seal inside with a BPA FREE plastic O-ring ensures this bottle to remain leak-proof.



SS-462
18oz 540ml



SS-461
30oz 900ml



Item Nr : SS-463
Capacity : 18oz 540ml

MOS

18oz double wall stainless steel bottle.

- double wall stainless steel can keep hot 6 hours and cold for 24 hours.
- screw open and close lid convenience for daily use.
- made from high quality food grade 304 stainless steel that is rust proofed , sturdy, durable and anti-scratching. It is suitable for any occasions like hiking, cycling, camping, gym, car, office or home.
- the deep groove seal inside with a BPA FREE plastic O-ring ensures this bottle to remain leak-proof.

CUP HOLDER



Item Nr : SC-060



Item Nr : SS-466
Capacity : 22oz 660ml



MERUCY

22oz double wall stainless steel tumbler.

- double wall stainless steel can keep hot 6 hours and cold for 24 hours.
- flip open and close lid convenience for daily use.
- made from high quality food grade 304 stainless steel that is rust proofed , sturdy, durable and anti-scratching. It is suitable for any occasions like hiking, cycling, camping, gym, car, office or home.
- the deep groove seal inside with a BPA FREE plastic O-ring ensures this bottle to remain leak-proof.

UrbanEco

www.cnurbaneco.com