

# 101 MORE



USB charger



carbiner clip  
convenience for daily use



white light  
when using

charge battery  
in red light



full battery  
in blue light



**HOT**  
6 Hours  
**COLD**  
24 Hours

High-Grade 304 Stainless Steel  
BPA-free & reusable  
Hand wash only

# Wireless Speaker Sport Bottle



18 oz, double wall vacuum insulated stainless steel,  
leak-proof wide mouth, keep hot water for 12 hours/  
cold water for 24 hours, the bottle is made of 304  
food-grade stainless steel.

**SOUND**  
**TC-008**  
530ml ,18oz

- Wireless speaker that you can connect your audio device.
- Compatible with iOS, Android, Phones, Tablets and others.
- IPX65 water resistant.
- Color-changing strobe lights on lid.
- Up to 4 hours battery life (on normal volume).
- Micro-USB port for easy charging, USB cord included.



difference color for selection

**UrbanEco**



**HOT**  
6 Hours  
**COLD**  
24 Hours

High-Grade 304 Stainless Steel  
BPA-free & reusable  
Hand wash only



## *Vacuum tumbler with glass liner*



10 oz, double wall vacuum insulated stainless steel,  
keep hot water for 12 hours  
cold water for 24 hours, the bottle is made of 304  
food-grade stainless steel.

**GLASS**  
**SS-636**  
300ml ,10oz

- Double wall stainless steel vacuum tumbler
- can keep hot for 6 Hours and Cold for 24 Hours
- fuse stainless steel and glass new techology
  - fresh taste of all kind of breverage
- meet FDA , BPA , CPSIA and EU standard



*difference color for selection*

**UrbanEco**



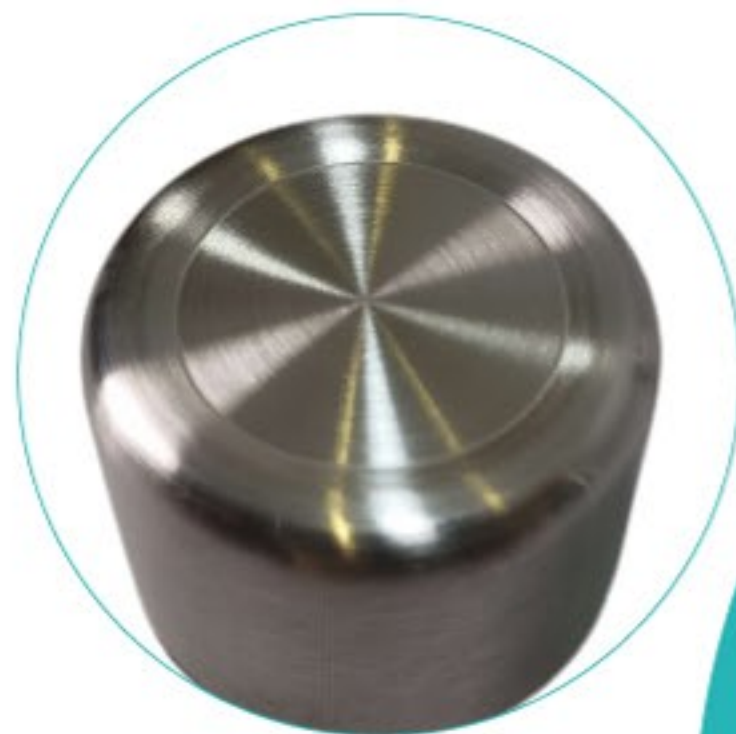
**HOT**  
6 Hours  
**COLD**  
24 Hours

High-Grade 304 Stainless Steel  
BPA-free & reusable  
Hand wash only



can put ice cube on the bottle

Top view of the lid



## Double wall stainless steel bottle



17 oz, double wall vacuum insulated stainless steel,  
keep hot water for 6 hours  
cold water for 24 hours, the bottle is made of 304  
food-grade stainless steel.

**LIM**  
**SS-620**  
500ml ,17oz

- Double wall stainless steel inner and outer
- can keep hot for 6 Hours and Cold for 24 Hours
  - cylinder shape can fit all kind of printing
- meet FDA , BPA , CPSIA and EU standard



difference color for selection



difference color for selection

**UrbanEco**



**MAYO**  
**SS-622**  
130ml ,4.5oz

- Double wall stainless steel inner and outer
- can keep hot for 6 Hours and Cold for 24 Hours
  - srew open and close non-leaking lid
- meet FDA , BPA , CPSIA and EU standard

# Double wall stainless steel Pocket bottle



Top view of lid ,  
you can print your logo on top



Front view of thread



4.5 oz, double wall vacuum insulated stainless steel,  
keep hot water for 12 hours  
cold water for 24 hours, the bottle is made of 304  
food-grade stainless steel.

**HOT**  
6 Hours  
**COLD**  
24 Hours

High-Grade 304 Stainless Steel  
BPA-free & reusable  
Hand wash only



difference color for selection

**UrbanEco**



# Double wall stainless steel tumbler

**CRANE**  
**SS-623**  
450ml ,15oz

- Double wall stainless steel inner and outer
- can keep hot for 6 Hours and Cold for 24 Hours
  - Slider open and close lid
- meet FDA , BPA , CPSIA and EU standard



sliding open



close for leak-proof

**HOT**  
6 Hours  
**COLD**  
24 Hours

High-Grade 304 Stainless Steel  
BPA-free & reusable  
Hand wash only



15 oz, double wall vacuum insulated stainless steel,  
keep hot water for 12 hours  
cold water for 24 hours, the bottle is made of 304  
food-grade stainless steel.



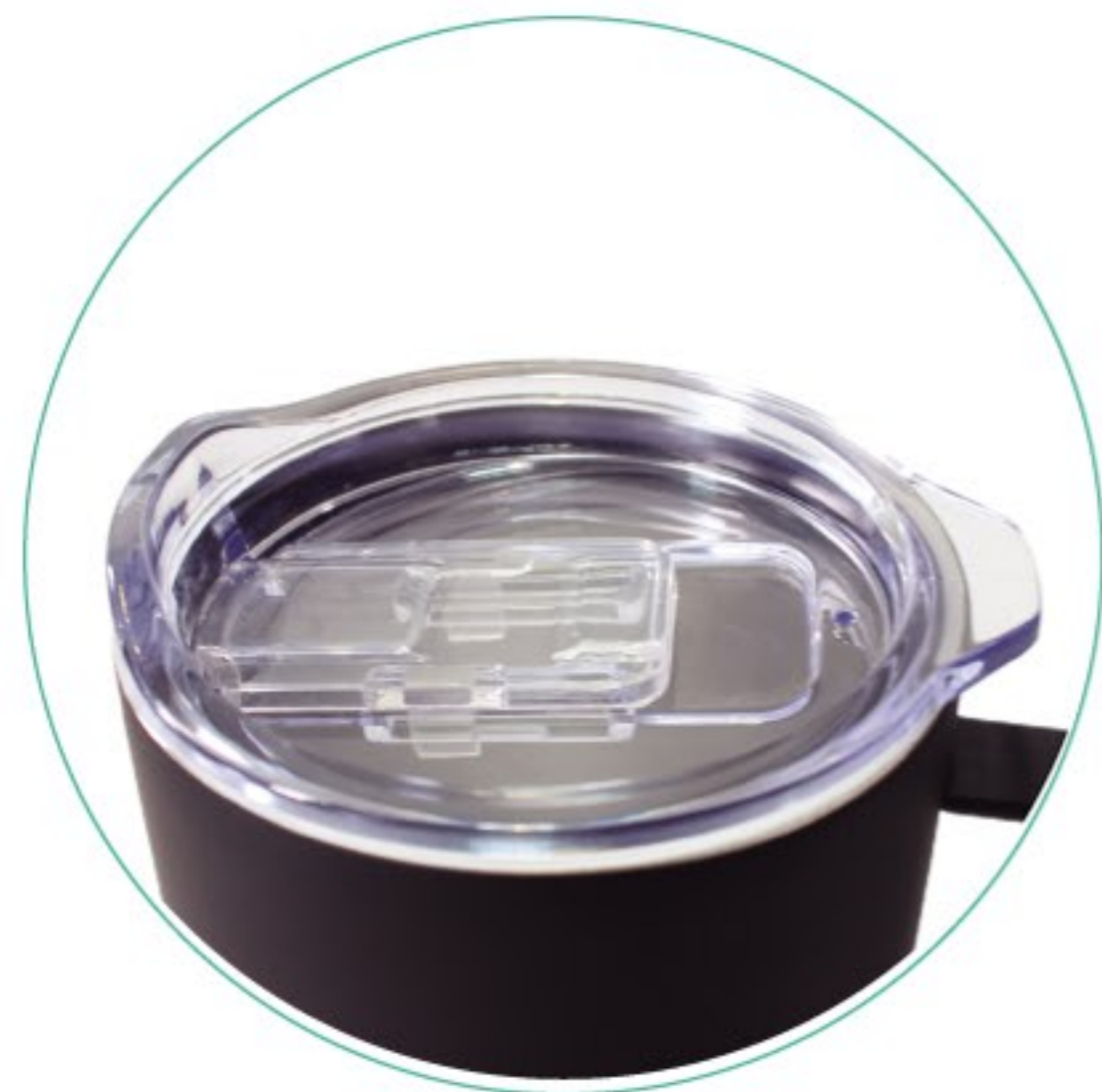
difference color for selection

**UrbanEco**



**HOT**  
6 Hours  
**COLD**  
24 Hours

High-Grade 304 Stainless Steel  
BPA-free & reusable  
Hand wash only



## Double wall stainless steel mug



19 oz, double wall vacuum insulated stainless steel,  
keep hot water for 12 hours  
cold water for 24 hours, the bottle is made of 304  
food-grade stainless steel.

**CHEER**  
**SS-633**  
570ml ,19oz

- Double wall stainless steel vacuum tumbler
- can keep hot for 6 Hours and Cold for 24 Hours
  - plastic slider open and close lid
- meet FDA , BPA , CPSIA and EU standard



difference color for selection

**UrbanEco**



**HOT**  
6 Hours  
**COLD**  
24 Hours

High-Grade 304 Stainless Steel  
BPA-free & reusable  
Hand wash only

can put ice cube on the bottle



## Double wall stainless steel bottle



17oz Double wall stainless steel bottle  
convenience for daily use

**BULGE**  
**SS-164**

480ml ,17oz

- Double wall stainless steel bottle.
- Can keep hot for 6 Hours and Cold for 24 Hours.
- Screw open and close lid.
- meet FDA , BPA , CPSIA and EU standard.



difference color for selection

**UrbanEco**



# Double wall stainless steel bottle

**EXTRA STRONG**  
**SS-187**  
600ml ,20oz

- Double wall stainless steel tumbler.
- Stainless steel slider open and close lid.
- Best seller item all over the year.
- meet FDA , BPA , CPSIA and EU standard.



difference color for selection

**HOT**  
6 Hours  
**COLD**  
24 Hours

High-Grade 304 Stainless Steel  
BPA-free & reusable  
Hand wash only



difference color for selection

20oz double wall stainless steel tumbler  
best seller item on the market.

**UrbanEco**



**HOT**  
6 Hours  
**COLD**  
24 Hours

High-Grade 304 Stainless Steel  
BPA-free & reusable  
Hand wash only



*difference color for selection*

## Double wall stainless steel tumbler



18oz, double wall vacuum insulated stainless steel,  
keep hot water for 6 hours  
cold water for 24 hours, the bottle is made of 304  
food-grade stainless steel.

**EXPERT**  
**SS-307**  
520ml ,18oz

- Double wall stainless steel inner and outer
- can keep hot for 6 Hours and Cold for 24 Hours
- Slider open and close lid
- meet FDA , BPA , CPSIA and EU standard



*difference color for selection*

**UrbanEco**



**COLD**  
**24 Hours**

High-Grade 304 Stainless Steel  
BPA-free & reusable  
Hand wash only

## Double wall stainless steel tumbler

**GO GO**  
**SS-325**  
620ml ,21oz

- Double wall stainless steel inner and outer
  - can keep Cold for 24 Hours
- Flip open and close lid with PP straw
- meet FDA , BPA , CPSIA and EU standard



21oz, double wall vacuum insulated stainless steel,  
keep cold water for 24 hours,  
the bottle is made of 304  
food-grade stainless steel.



difference color for selection

**UrbanEco**



# Double wall stainless steel tumbler

**QUICR**  
**SS-335A**  
660ml ,22oz

- Double wall stainless steel inner and outer
- can keep Cold for 24 Hours
- screw open and close drinking straw
- meet FDA, BPA ,CPSIA and EU standard



22 oz,double wall vacuum insulated stainless steel,  
keep cold water for 24 hours,  
the bottle is made of 304  
food-grade stainless steel.



difference color for selection

**UrbanEco**



**COLD**  
**24 Hours**

High-Grade 304 Stainless Steel  
BPA-free & reusable  
Hand wash only



**HOT**  
6 Hours  
**COLD**  
24 Hours

High-Grade 304 Stainless Steel  
BPA-free & reusable  
Hand wash only

## Double wall stainless steel tumbler

**SPARK**  
**SS-347**  
600ml ,20oz

- Double wall stainless steel inner and outer
- can keep hot for 6 Hours and Cold for 24 Hours
  - Flip open and close lid
- meet FDA , BPA , CPSIA and EU standard



20oz, double wall vacuum insulated stainless steel,  
keep hot water for 6 hours  
cold water for 24 hours, the bottle is made of 304  
food-grade stainless steel.



difference color for selection

**UrbanEco**



**HOT**  
6 Hours  
**COLD**  
24 Hours

High-Grade 304 Stainless Steel  
BPA-free & reusable  
Hand wash only



## Double wall stainless steel mug



14oz, double wall vacuum insulated stainless steel,  
keep hot water for 6 hours  
cold water for 24 hours, the bottle is made of 304  
food-grade stainless steel.

**CAMP**  
**SS-367**  
420ml ,14oz

- Double wall stainless steel inner and outer
- can keep hot for 6 Hours and Cold for 24 Hours
  - Press open and close drink thru lid
- meet FDA , BPA , CPSIA and EU standard



difference color for selection

**UrbanEco**



**COLES**  
**SS-374**  
 720ml ,24oz

## Double wall stainless steel bottle



Top view of lid ,  
 you can print your logo on top



**HOT**  
 6 Hours  
**COLD**  
 24 Hours

High-Grade 304 Stainless Steel  
 BPA-free & reusable  
 Hand wash only



24oz double wall stainless steel bottle  
 with two tone color outer

- Double wall stainless steel bottle.
- Stainless steel screw open and close lid.
- Screw open and close lid.
- Two tone color outer.
- meet FDA , BPA , CPSIA and EU standard.



difference color for selection

**UrbanEco**



**HOT**  
6 Hours  
**COLD**  
24 Hours

High-Grade 304 Stainless Steel  
BPA-free & reusable  
Hand wash only



## Double wall stainless steel bottle with tea infuser

**TEA BOTIQUE**  
**SS-386**  
510ml ,17oz

- Double wall stainless steel inner and outer
- can keep hot for 6 Hours and Cold for 24 Hours
- Screw open and close stainless steel tea infuser
- meet FDA , BPA , CPSIA and EU standard



17oz, double wall vacuum insulated stainless steel,  
keep hot water for 6 hours  
cold water for 24 hours, the bottle is made of 304  
food-grade stainless steel.



difference color for selection

**UrbanEco**



## Double wall stainless steel bottle

**PRESS**  
**SS-431**  
360ml , 12.7oz

- Double wall stainless steel bottle.
- Can keep hot for 6 Hours and Cold for 24 Hours.
- Press open and close lid.
- meet FDA , BPA , CPSIA and EU standard.



**HOT**  
6 Hours  
**COLD**  
24 Hours

High-Grade 304 Stainless Steel  
BPA-free & reusable  
Hand wash only



12.7oz double wall stainless steel bottle  
Can keep hot for 6 hours and cold for 24 Hours



difference color for selection

**UrbanEco**



**HOT**  
6 Hours  
**COLD**  
24 Hours

High-Grade 304 Stainless Steel  
BPA-free & reusable  
Hand wash only

Press for close

Press for open  
for drink

## Double wall stainless steel bottle

**LINK**  
**SS-445**  
600ml ,20oz

- Double wall stainless steel inner and outer
- can keep hot for 6 Hours and Cold for 24 Hours
  - One press 360 degree drinking lid
- meet FDA , BPA , CPSIA and EU standard

UrbanEco

20oz, double wall vacuum insulated stainless steel,  
keep hot water for 6 hours  
cold water for 24 hours, the bottle is made of 304  
food-grade stainless steel.



difference color for selection

**UrbanEco**



**HOT**  
6 Hours  
**COLD**  
24 Hours

High-Grade 304 Stainless Steel  
BPA-free & reusable  
Hand wash only



## Double wall stainless steel bottle



21oz, double wall vacuum insulated stainless steel,  
keep hot water for 6 hours  
cold water for 24 hours, the bottle is made of 304  
food-grade stainless steel.

**MORE**  
**SS-451**  
630ml ,21oz

- Double wall stainless steel inner and outer
- can keep hot for 6 Hours and Cold for 24 Hours
- Screw open and close with wood printing lid
- meet FDA , BPA , CPSIA and EU standard



difference color for selection

**UrbanEco**



**HOT**  
6 Hours  
**COLD**  
24 Hours

High-Grade 304 Stainless Steel  
BPA-free & reusable  
Hand wash only



Top view of lid



## Double wall stainless steel bottle

**EMBLEM**  
**SS-478**  
480ml ,16oz

- Double wall stainless steel inner and outer
- can keep hot for 6 Hours and Cold for 24 Hours
- Screw open and close cork lid
- meet FDA , BPA , CPSIA and EU standard



difference color for selection



16oz, double wall vacuum insulated stainless steel,  
keep hot water for 6 hours  
cold water for 24 hours, the bottle is made of 304  
food-grade stainless steel.



difference color for selection

**UrbanEco**



**COLD**  
**24 Hours**

High-Grade 304 Stainless Steel  
BPA-free & reusable  
Hand wash only



## Double wall stainless steel tumbler

**TURBO**  
**SS-487**  
600ml ,20oz

- Double wall stainless steel inner and outer
  - can keep Cold for 24 Hours
  - Press lid with PP drinking straw
- meet FDA , BPA , CPSIA and EU standard



*difference color for selection*



20oz, double wall vacuum insulated stainless steel,  
keep cold water for 24 hours,  
the bottle is made of 304  
food-grade stainless steel.



*difference color for selection*

**UrbanEco**



# Double wall stainless steel bottle

**JOURNEY**

**SS-489**

480ml ,16oz

- Double wall stainless steel inner and outer
- can keep hot for 6 Hours and Cold for 24 Hours
  - screw open and close non-leaking lid
- meet FDA , BPA , CPSIA and EU standard

can put ice cube on the bottle



16 oz, double wall vacuum insulated stainless steel,  
keep hot water for 6 hours  
cold water for 24 hours, the bottle is made of 304  
food-grade stainless steel.



difference color for selection

**UrbanEco**

**HOT**  
6 Hours  
**COLD**  
24 Hours

High-Grade 304 Stainless Steel  
BPA-free & reusable  
Hand wash only



# Double wall stainless steel tumbler

**MAX**  
**SS-490**  
360ml ,12oz

- Double wall stainless steel inner and outer
- can keep hot for 6 Hours and Cold for 24 Hours
  - flip open and close non-leaking lid
- meet FDA , BPA , CPSIA and EU standard



**HOT**  
6 Hours  
**COLD**  
24 Hours

High-Grade 304 Stainless Steel  
BPA-free & reusable  
Hand wash only



12 oz, double wall vacuum insulated stainless steel,  
keep hot water for 6 hours  
cold water for 24 hours, the bottle is made of 304  
food-grade stainless steel.



difference color for selection

**UrbanEco**



## LIBERTY SS-505

360ml ,12oz



Top view of lid ,  
you can print your logo on top



difference color for selection

## Double wall stainless steel tumbler



**HOT**  
6 Hours  
**COLD**  
24 Hours

High-Grade 304 Stainless Steel  
BPA-free & reusable  
Hand wash only

double wall vacuum insulated stainless steel,  
keep hot water for 6 hours  
cold water for 24 hours, the bottle is made of 304  
food-grade stainless steel.

## LIBERTY SS-506

480ml ,16oz



Tea / Ice Infuser  
convenience for daily use

- Double wall stainless steel inner and outer
- can keep hot for 6 Hours and Cold for 24 Hours
  - screw open and close lid
- meet FDA , BPA , CPSIA and EU standard



difference color for selection

UrbanEco



**HOT**  
6 Hours  
**COLD**  
24 Hours

High-Grade 304 Stainless Steel  
BPA-free & reusable  
Hand wash only

## Double wall stainless steel bottle

**AGODA**  
**SS-511**  
480ml ,16oz

- Double wall stainless steel inner and outer
- can keep hot for 6 Hours and Cold for 24 Hours
  - screw open and close lid
- meet FDA , BPA , CPSIA and EU standard



16oz, double wall vacuum insulated stainless steel,  
keep hot water for 6 hours  
cold water for 24 hours, the bottle is made of 304  
food-grade stainless steel.



difference color for selection

**UrbanEco**



**HOT**  
6 Hours  
**COLD**  
24 Hours

High-Grade 304 Stainless Steel  
BPA-free & reusable  
Hand wash only



## Double wall stainless steel bottle



16oz, double wall vacuum insulated stainless steel,  
keep hot water for 6 hours  
cold water for 24 hours, the bottle is made of 304  
food-grade stainless steel.

**HALO**  
**SS-513**  
480ml ,16oz

- Double wall stainless steel inner and outer
- can keep hot for 6 Hours and Cold for 24 Hours
  - screw open and close lid
- meet FDA , BPA , CPSIA and EU standard



difference color for selection

**UrbanEco**



difference printing for selection



**COLD  
24 Hours**

High-Grade 304 Stainless Steel  
BPA-free & reusable  
Hand wash only

## Double wall stainless steel tumbler

**VESSEL**

**SS-521**

690ml ,23oz

- Double wall stainless steel inner and outer
- can keep Cold for 24 Hours
- screw open and close with PP straw lid
- meet FDA , BPA , CPSIA and EU standard



23oz, double wall vacuum insulated stainless steel,  
keep cold water for 24 hours,  
the bottle is made of 304  
food-grade stainless steel.



difference color for selection

**UrbanEco**



**HOT**  
6 Hours  
**COLD**  
24 Hours

High-Grade 304 Stainless Steel  
BPA-free & reusable  
Hand wash only



difference lid for selection



difference printing for selection

## Double wall stainless steel tumbler



14oz, double wall vacuum insulated stainless steel,  
keep hot water for 12 hours  
cold water for 24 hours, the bottle is made of 304  
food-grade stainless steel.

**CHAT**  
**SS-528**  
420ml ,14oz

- Double wall stainless steel inner and outer
- can keep hot for 6 Hours and Cold for 24 Hours
  - srew open and close non-leaking lid
- meet FDA , BPA , CPSIA and EU standard



difference color for selection

**UrbanEco**



**HOT**  
6 Hours  
**COLD**  
24 Hours

High-Grade 304 Stainless Steel  
BPA-free & reusable  
Hand wash only

*difference lid for selection*



*difference printing for selection*

## Double wall stainless steel tumbler



18oz, double wall vacuum insulated stainless steel,  
keep hot water for 6 hours  
cold water for 24 hours, the bottle is made of 304  
food-grade stainless steel.

**CHAT**  
**SS-529**  
540ml ,18oz

- Double wall stainless steel inner and outer
- can keep hot for 6 Hours and Cold for 24 Hours
- Screw open and close non-leaking lid
- meet FDA , BPA , CPSIA and EU standard



*difference color for selection*

**UrbanEco**



**HOT**  
6 Hours  
**COLD**  
24 Hours

High-Grade 304 Stainless Steel  
BPA-free & reusable  
Hand wash only

## Double wall stainless steel tumbler

**CHAT**  
**SS-529T**  
540ml ,18oz

- Double wall stainless steel inner and outer
- can keep hot for 6 Hours and Cold for 24 Hours
  - srew open and close non-leaking lid
- meet FDA , BPA , CPSIA and EU standard



18oz, double wall vacuum insulated stainless steel,  
keep hot water for 6 hours  
cold water for 24 hours, the bottle is made of 304  
food-grade stainless steel.



difference color for selection

**UrbanEco**



**HOT**  
6 Hours  
**COLD**  
24 Hours

High-Grade 304 Stainless Steel  
BPA-free & reusable  
Hand wash only

## Double wall stainless steel bottle

**CYLIN**  
**SS-531**  
480ml ,16oz

- Double wall stainless steel bottle.
- Can keep hot for 6 Hours and Cold for 24 Hours.
- Screw open and close lid.
- meet FDA , BPA , CPSIA and EU standard.



Top view of lid ,  
you can print your logo on top



Front view of thread



16oz double wall stainless steel bottle  
Can keep hot for 6 hours and cold for 24 Hours



difference color for selection

**UrbanEco**



**HOT**  
6 Hours  
**COLD**  
24 Hours

High-Grade 304 Stainless Steel  
BPA-free & reusable  
Hand wash only



Inside thread of the bottle ,  
better taste of the beverage

## Double wall stainless steel bottle



16oz double wall stainless steel bottle  
Can keep hot for 4 hours and cold for 24 Hours



Top view of lid ,  
you can print your logo on top

**TOWER**  
**SS-532**  
480ml ,16oz

- Double wall stainless steel bottle.
- Can keep hot for 6 Hours and Cold for 24 Hours.
- Screw open and close lid.
- Matching color silicone handle.
- meet FDA , BPA , CPSIA and EU standard.



difference color for selection

**UrbanEco**



**HOT**  
6 Hours  
**COLD**  
24 Hours

High-Grade 304 Stainless Steel  
BPA-free & reusable  
Hand wash only



## Double wall stainless steel tumbler



12oz double wall stainless steel bottle  
Can keep hot for 6 hours and cold for 24 Hours

**SIMPLE**  
**SS-533**  
360ml ,12oz

- Double wall stainless steel bottle.
- Can keep hot for 6 Hours and Cold for 24 Hours.
- Flip open and close lid.
- meet FDA , BPA , CPSIA and EU standard.



difference color for selection

**UrbanEco**



**HOT**  
6 Hours  
**COLD**  
24 Hours

High-Grade 304 Stainless Steel  
BPA-free & reusable  
Hand wash only



click for  
360 free drink



close for lock water

## Double wall stainless steel tumbler

**FREE DRINK**  
**SS-534**  
530ml ,18oz

- Double wall stainless steel inner and outer
- can keep hot for 6 Hours and Cold for 24 Hours
- Press open and close 360 degree free drink
- meet FDA , BPA , CPSIA and EU standard



difference color for selection



18oz, double wall vacuum insulated stainless steel,  
keep hot water for 6 hours  
cold water for 24 hours, the bottle is made of 304  
food-grade stainless steel.



difference color for selection

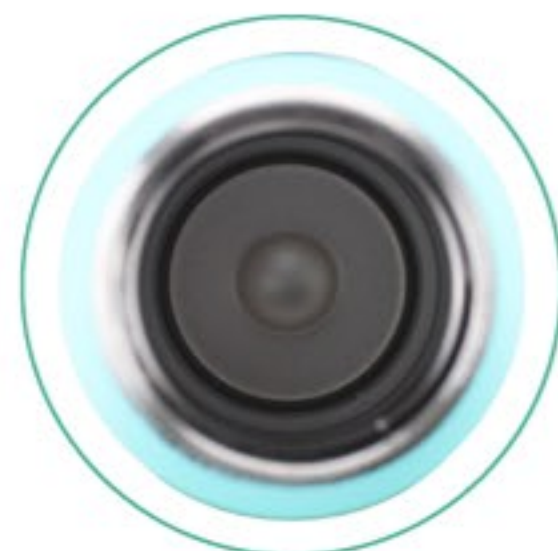
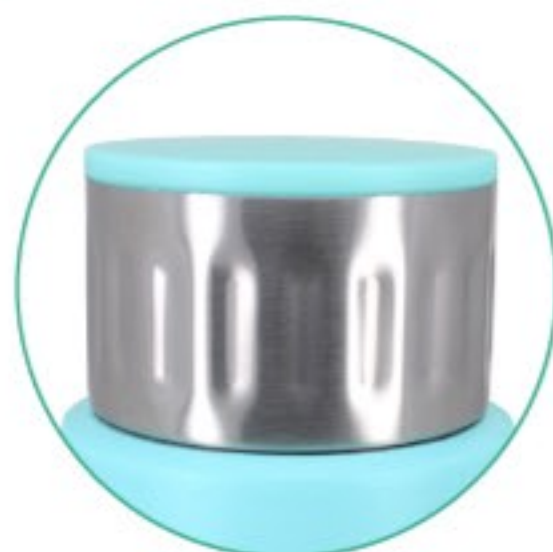
**UrbanEco**



# ENERGY SS-535 480ml ,16oz

## Double wall stainless steel bottle

- Double wall stainless steel bottle.
- Can keep hot for 6 Hours and Cold for 24 Hours.
- Screw open and close lid.
- Two Size with easy holder grip.
- meet FDA , BPA , CPSIA and EU standard.



difference color for selection

16oz double wall stainless steel bottle  
with two tone color outer

**HOT**  
6 Hours  
**COLD**  
24 Hours

High-Grade 304 Stainless Steel  
BPA-free & reusable  
Hand wash only

UrbanEco



**CYRUS**  
**SS-536**  
470ml ,16oz

Double wall stainless steel bottle

- Double wall stainless steel bottle.
- Can keep hot for 6 Hours and Cold for 24 Hours.
- Screw open and close lid.
- Built-in carrying handle on lid.
- meet FDA , BPA , CPSIA and EU standard.



close hanger silicone



open hanger silicone



16oz double wall stainless steel bottle  
Can keep hot for 6 hours and cold for 24 Hours



difference color for selection

**HOT**  
6 Hours  
**COLD**  
24 Hours

High-Grade 304 Stainless Steel  
BPA-free & reusable  
Hand wash only

**UrbanEco**



**SWISS**  
**SS-538**  
510ml ,17oz

- Double wall stainless steel tumbler.
- Stainless steel 360 degree open and close lid.
- One clike open and drink convience for daily use.
- meet FDA , BPA , CPSIA and EU standard.



difference color for selection

## Double wall stainless steel bottle



17oz double wall stainless steel bottle  
convience for daily use.

close for lock water



open for  
360 free drink



**HOT**  
6 Hours  
**COLD**  
24 Hours

High-Grade 304 Stainless Steel  
BPA-free & resuable  
Hand wash only

**UrbanEco**



**HOT**  
6 Hours  
**COLD**  
24 Hours

High-Grade 304 Stainless Steel  
BPA-free & reusable  
Hand wash only

## Double wall stainless steel tumbler

**CAMP**  
**SS-540**  
330ml , 11oz

- Double wall stainless steel inner and outer
- can keep hot for 6 Hours and Cold for 24 Hours
- Slider open and close lid
- meet FDA , BPA , CPSIA and EU standard



11oz, double wall vacuum insulated stainless steel,  
keep hot water for 6 hours  
cold water for 24 hours, the bottle is made of 304  
food-grade stainless steel.



difference color for selection

**UrbanEco**



## Double wall stainless steel food container

**FOOD**  
**SS-542**

360ml ,12.6oz

- Double wall stainless steel inner and outer
- can keep hot for 6 Hours and Cold for 24 Hours
- Build in plastic handle easy for carrying
- Stainless steel spoon included convience for daily use
- meet FDA , BPA , CPSIA and EU standard



12.6oz Double wall stainless steel  
food container



difference color for selection

**UrbanEco**



# Double wall stainless steel food container

**FOOD**  
**SS-543**  
314ml ,11oz

- Double wall stainless steel inner and outer
- can keep hot for 6 Hours and Cold for 24 Hours
- Build in plastic handle easy for carrying
- Stainless steel spoon included convience for daily use
- meet FDA , BPA , CPSIA and EU standard



11oz Double wall stainless steel  
food container



difference color for selection

**UrbanEco**



# Double wall stainless steel food container

**FOOD**  
**SS-544**  
540ml ,18oz

- Double wall stainless steel inner and outer
- can keep hot for 6 Hours and Cold for 24 Hours
- Stainless steel spoon included convenience for daily use
- meet FDA , BPA , CPSIA and EU standard



18oz Double wall stainless steel  
food container



difference color for selection

**UrbanEco**



**SKINNY**  
**SS-556**  
443ml ,15.5oz

- Double wall stainless steel bottle.
- Can keep hot for 6 Hours and Cold for 24 Hours.
  - Screw open and close lid.
  - Flip open and close drinking lid.
- meet FDA , BPA , CPSIA and EU standard.



**HOT**  
6 Hours  
**COLD**  
24 Hours

High-Grade 304 Stainless Steel  
BPA-free & reusable  
Hand wash only

## Double wall stainless steel tumbler



16oz double wall stainless steel bottle  
with two tone color outer



difference color for selection

**UrbanEco**



**HUGO**  
**SS-564**  
 520ml ,18oz

## Double wall stainless steel bottle



**HOT**  
 6 Hours  
**COLD**  
 24 Hours

High-Grade 304 Stainless Steel  
 BPA-free & reusable  
 Hand wash only

*difference color for selection*



24oz double wall stainless steel bottle  
 can keep hot and cold



Lid with silicone hanger

- Double wall stainless steel bottle.
- Can keep hot for 6 Hours and Cold for 24 Hours.
- Screw open and close lid.
- Lid with build in hidden silicone.
- meet FDA , BPA , CPSIA and EU standard.



*difference color for selection*

**UrbanEco**



# Double wall stainless steel cup and bottle

**OUTDOOR**

**SS-567**

1900ml ,64oz

- Double wall stainless steel inner and outer
- can keep hot for 12 Hours and Cold for 24 Hours
- Top with 10oz Double wall stainless steel cup
- meet FDA , BPA , CPSIA and EU standard



10oz Double wall Cup

**HOT**  
12 Hours  
**COLD**  
24 Hours

High-Grade 304 Stainless Steel  
BPA-free & reusable  
Hand wash only



64 oz, double wall vacuum insulated stainless steel,  
keep hot water for 12 hours  
cold water for 24 hours, the bottle is made of 304  
food-grade stainless steel.



SS-565 1000ml ,34oz



SS-566 1500ml ,51oz



SS-567 1900ml ,64oz

difference color for selection

**UrbanEco**



**POSITIVE**  
**SS-594**  
480ml ,16oz

## Double wall stainless steel bottle

- Double wall stainless steel bottle.
- Can keep hot for 6 Hours and Cold for 24 Hours.
- Screw open and close lid.
- Lid with build in silicone handle and with wood pattern print.
- meet FDA , BPA , CPSIA and EU standard.



**HOT**  
6 Hours  
**COLD**  
24 Hours

High-Grade 304 Stainless Steel  
BPA-free & reusable  
Hand wash only



16oz double wall stainless steel bottle  
with wood color lid



difference color for selection

**UrbanEco**



**DICO**  
**SS-602**  
 300ml ,10oz

- Double wall stainless steel inner and outer
- can keep hot for 6 Hours and Cold for 24 Hours
  - can fit most of the coffe machine.
- can keep all kind of breveage for a while
- meet FDA , BPA , CPSIA and EU standard



*difference color for selection*

**DICO**  
**SS-601**  
 480ml ,16oz



*difference color for selection*

## Double wall stainless steel tumbler



18 oz, double wall vacuum insulated stainless steel,  
 keep hot water for 6 hours  
 cold water for 24 hours, the bottle is made of 304  
 food-grade stainless steel.

*open for the lid*



*Top view of the lid*



*silicone open lid with drinking hole ,  
 easy for the daily use*

**HOT**  
 6 Hours  
**COLD**  
 24 Hours

High-Grade 304 Stainless Steel  
 BPA-free & reusable  
 Hand wash only

**UrbanEco**



# MOUNTAIN

## SS-605

300ml ,10oz

- Double wall stainless steel inner and outer
- can keep hot for 6 Hours and Cold for 24 Hours
- mountain shape good for bar and wine use
- can keep all kind of beverage for a while
- meet FDA , BPA , CPSIA and EU standard

## Double wall stainless steel tumbler



**HOT**  
6 Hours  
**COLD**  
24 Hours

High-Grade 304 Stainless Steel  
BPA-free & reusable  
Hand wash only



10oz, double wall vacuum insulated stainless steel,  
keep hot water for 6 hours  
cold water for 24 hours, the bottle is made of 304  
food-grade stainless steel.



different color for selection

**UrbanEco**



bamboo top on the lid and stopper

## Double wall stainless steel bottle

**PLASTIC FREE**

**SS-607**

750ml ,25oz

- Double wall stainless steel inner and outer
- can keep hot for 6 Hours and Cold for 24 Hours
  - bamboo top on the lid and stopper
  - double wall can keep hot and cold cup
- meet FDA , BPA , CPSIA and EU standard

**HOT**  
6 Hours  
**COLD**  
24 Hours

High-Grade 304 Stainless Steel  
BPA-free & reusable  
Hand wash only

5.4oz double wall can keep hot and cold cup

25 oz, double wall vacuum insulated stainless steel,  
keep hot water for 12 hours  
cold water for 24 hours, the bottle is made of 304  
food-grade stainless steel.

difference color for selection

**UrbanEco**



# Double wall stainless steel tumbler

**HANDLE**

**SS-611**

630ml ,21oz

- Double wall stainless steel inner and outer
- can keep hot for 6 Hours and Cold for 24 Hours
  - build in handle easy for daily use
  - *silicone twisted flip lid*
- meet FDA , BPA , CPSIA and EU standard



*silicone twisted flip lid*

**HOT**  
6 Hours  
**COLD**  
24 Hours

High-Grade 304 Stainless Steel  
BPA-free & reusable  
Hand wash only



21 oz, double wall vacuum insulated stainless steel,  
keep hot water for 6 hours  
cold water for 24 hours, the bottle is made of 304  
food-grade stainless steel.



*difference color for selection*

**UrbanEco**



# Double wall stainless steel tumbler

**GRIP**  
**SS-612**  
450ml ,15oz

- Double wall stainless steel inner and outer
- can keep hot for 6 Hours and Cold for 24 Hours
  - easy hold grip on two side
  - flip open and close non-leaking lid
- meet FDA , BPA , CPSIA and EU standard

close for non-leaking lid



flip open drinking lid



easy hold grip on two side



15 oz, double wall vacuum insulated stainless steel,  
keep hot water for 12 hours  
cold water for 24 hours, the bottle is made of 304  
food-grade stainless steel.



difference color for selection

**UrbanEco**

**HOT**  
6 Hours  
**COLD**  
24 Hours

High-Grade 304 Stainless Steel  
BPA-free & reusable  
Hand wash only



# Double wall stainless steel bottle

**BULGE**  
**SS-613**  
480ml ,17oz

- Double wall stainless steel inner and outer
- can keep hot for 6 Hours and Cold for 24 Hours
- with silicone hanger and carbiner convenient for outdoor and camping.
- meet FDA , BPA , CPSIA and EU standard



17 oz, double wall vacuum insulated stainless steel,  
keep hot water for 6 hours  
cold water for 24 hours, the bottle is made of 304  
food-grade stainless steel.

**HOT**  
6 Hours  
**COLD**  
24 Hours

High-Grade 304 Stainless Steel  
BPA-free & reusable  
Hand wash only



difference color for selection



difference color for selection

**UrbanEco**





## Double wall stainless steel bottle

**SMALL**  
**SS-619**  
350ml ,12oz

- Double wall stainless steel inner and outer
- can keep Cold for 24 Hours
- cylinder shape can fit all kind of printing
- build in drinking straw easy for the kid daily use
- meet FDA , BPA , CPSIA and EU standard



can print difference print on the bottle

17 oz, double wall vacuum insulated stainless steel,  
keep cold water for 24 hours  
the bottle is made of 304  
food-grade stainless steel.



difference color for selection

**UrbanEco**



**CHEER**  
**SB-111**

870ml ,29oz

- Single wall stainless steel bottle.
- Matching lid color silicone.
- Screw open and close lid.
- meet FDA , BPA , CPSIA and EU standard.



difference color for selection

**UrbanEco**

# Single wall stainless steel bottle



29oz single wall stainless steel bottle  
with matching lid color silicone.



**ALVIN**  
**SB-112**  
 840ml ,28oz

- Single wall stainless steel bottle.
- Metal screw open and close lid.
- Build in removable metal hanger.
- meet FDA , BPA , CPSIA and EU standard.

# Single wall stainless steel bottle



28oz single wall stainless steel bottle  
 with metal hanger



difference color for selection



**MELBONURE**

**SB-114**

600ml ,20oz

*Single wall stainless steel bottle*

**MELBONURE**

**SB-115**

720ml ,24oz

- Single wall stainless steel bottle.
- Plastic screw open and close lid.
- Matching color silicone hanger easy for carrying.
- meet FDA , BPA , CPSIA and EU standard.



difference color for selection



28oz single wall stainless steel bottle  
with metal hanger



difference color for selection

**UrbanEco**



**STEEL**  
**SB-116**  
300ml ,10oz

- Single wall stainless steel bottle.
- Colorful silicone ring with metal carbiner,  
• matching color lid.
- meet FDA , BPA , CPSIA and EU standard.



*screw open and close drinking mouth*



*carbiner clip easy for the daily use*

# Single wall stainless steel bottle



10oz single wall stainless steel bottle  
with carabiner clip



*difference color for selection*

**UrbanEco**



**STEEL**  
**SB-117**  
510ml ,17oz

- Single wall stainless steel bottle.
- Colorful silicone ring with metal carbiner,
  - matching color lid.
- meet FDA , BPA , CPSIA and EU standard.

## Single wall stainless steel bottle



*screw open and close drinking mouth*



*carbiner clip easy for the daily use*



31.5oz single wall stainless steel bottle  
with carabiner clip



*difference color for selection*

**UrbanEco**



# STEEL SB-118

950ml ,31.5oz

- Single wall stainless steel bottle.
- Colorful silicone ring with metal carbiner,
  - matching color lid.
- meet FDA , BPA , CPSIA and EU standard.

## Single wall stainless steel bottle



screw open and close drinking mouth



carbiner clip easy for the daily use



31.5oz single wall stainless steel bottle  
with carabiner clip



difference color for selection

UrbanEco



# Stainless steel tumbler

**VEGA**  
**SP-109**  
420ml ,14.8oz

- Double wall stainless steel outer and plastic inner
  - can keep hot and cold for a while
- Slider open and close lid convenient for daily use
  - meet FDA , BPA , CPSIA and EU standard



14.8oz Double wall stainless steel tumbler ,  
slider open and close lid



difference color for selection

**UrbanEco**



# Stainless steel tumbler

**FUSE**  
**SP-126**  
450ml ,16oz

- Double wall stainless steel outer and plastic inner
- can keep hot and cold for a while
- Flip open and close lid convenience for daily use
- meet FDA , BPA , CPSIA and EU standard



difference color for selection



16oz Double wall stainless steel tumbler ,  
flip open and close lid



difference color for selection

**UrbanEco**



## Stainless steel tumbler

**FORMER**

**SP-140**

590ml ,20oz

- Double wall stainless steel outer and plastic inner
  - can keep hot and cold for a while
- Screw open and close lid convenient for daily use
  - Carbiner clip handle good for camping use
  - meet FDA , BPA , CPSIA and EU standard



20oz Double wall stainless steel tumbler ,  
carbiner clip handle is good for camping use



difference color for selection

difference color for selection

**UrbanEco**



# Stainless steel tumbler

**PRESTO**

**SP-151**

360ml ,12oz

- Double wall stainless steel outer and plastic inner
- can keep hot and cold for a while
- Slider open and close lid convenience for daily use
- meet FDA , BPA , CPSIA and EU standard



12oz Double wall stainless steel tumbler ,  
slider open and close lid



difference color for selection

**UrbanEco**



**EGG**  
**SP-154**  
330ml ,11oz

## Stainless steel tumbler

- Double wall stainless steel outer and plastic inner
- can keep hot and cold for a while
- Slider open and close lid convenience for daily use
- meet FDA , BPA , CPSIA and EU standard

UrbanEco

11oz Double wall stainless steel tumbler ,  
slider open and close lid

difference color for selection

UrbanEco

difference color for selection





# Stainless steel tumbler

**CURVES**  
**SP-159**  
530ml ,18oz

- Double wall stainless steel outer and plastic inner
  - can keep hot and Cold for a while
- Flip open and close lid convenience for daily use
  - Curves stainless steel fashion and fancy
  - meet FDA , BPA , CPSIA and EU standard



18oz Double wall stainless steel tumbler ,  
Curve stainless steel fashion and trendy



difference color for selection

**UrbanEco**



## Double wall plastic tumbler

**CLICK**  
**DP-321**  
460ml ,16.2oz

- Double wall plastic tumbler.
- Flip open and close lid convenience for the daily use.
- Made of BPA Free plastic.
- Double wall construction can keep cold beverage for a while.
- meet FDA , BPA , CPSIA and EU standard.



16.2oz Double wall plastic tumbler  
convenience for the daily use.



difference color for selection

**UrbanEco**



**HARMONY**

**DP-341**

450ml ,16oz

## Double wall plastic tumbler

- Double wall plastic tumbler with flip open and close lid
- Double wall construction can keep cold for a while
  - Flip open and close lid
- can print 4 color logo and pattern
- meet FDA , BPA , CPSIA and EU standard



Close



difference printing for selection



16 oz Double wall plastic tumbler  
can use all the day for your  
daily coffee and beverage



difference color for selection

**UrbanEco**





## How to use coffee press



# Double wall plastic french press



18 oz Double wall plastic tumbler  
French press function,  
you can enjoy your coffee on anywhere

**NARS**  
**DP-365**  
550ml ,18oz

- Double wall plastic tumbler with flip open and close lid
- Double wall construction can keep cold for a while
- Flip open and close lid
- Build in French press function , you can drink your coffee on any where
- can print 4 color logo and pattern
- meet FDA , BPA , CPSIA and EU standard



difference printing for selection



difference color for selection

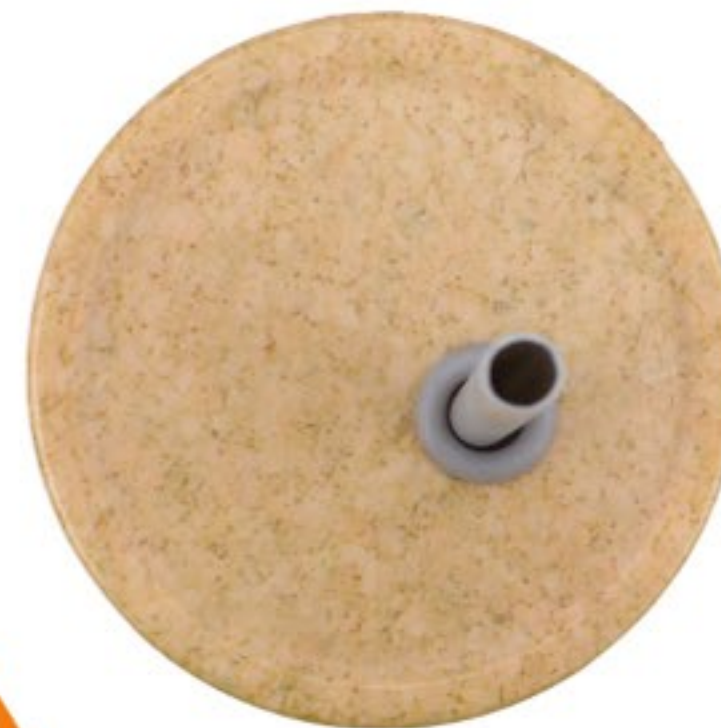
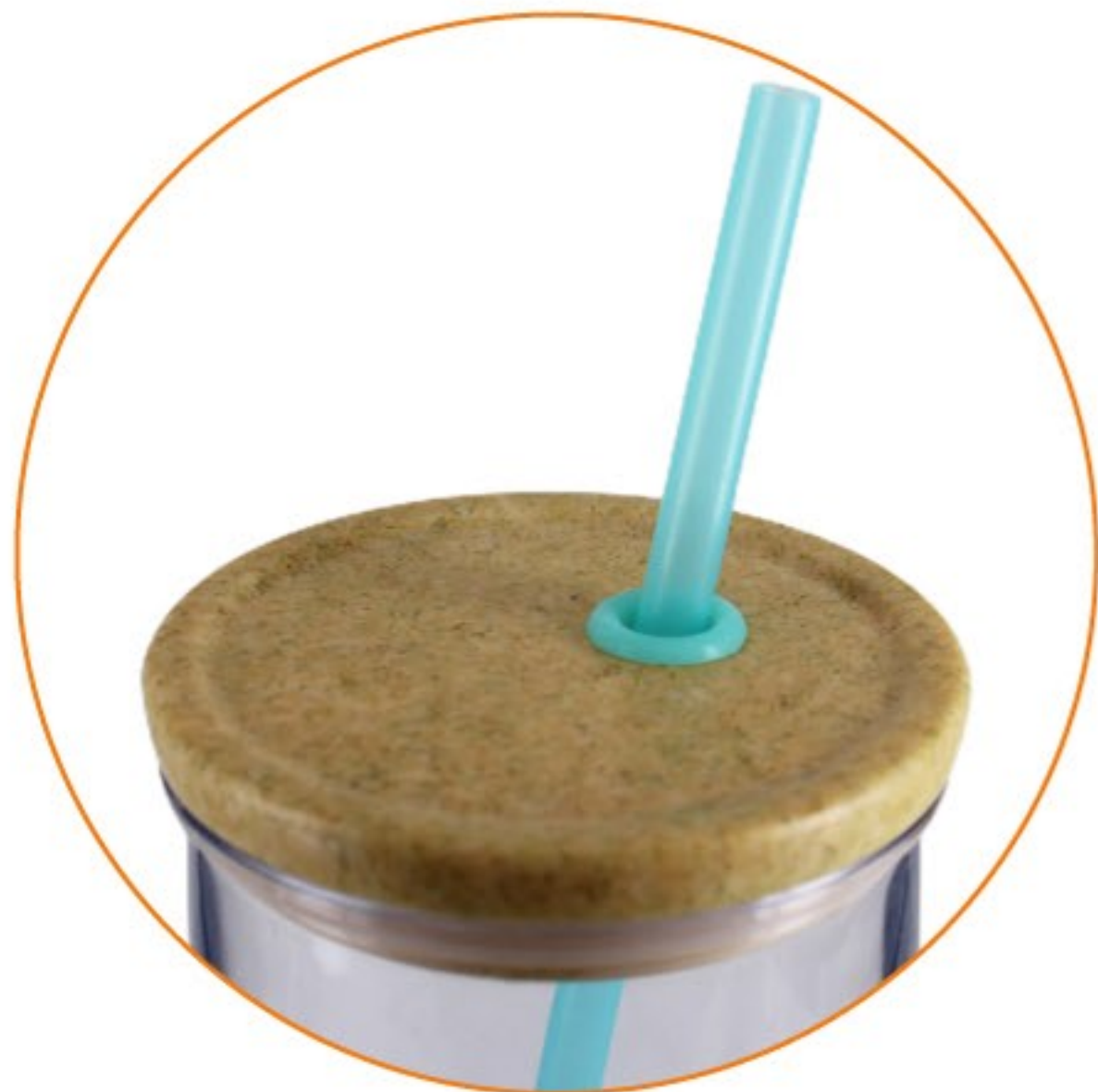
**UrbanEco**



## Summer straw tumbler

**TURBO**  
**DP-368**  
600ml ,20oz

- Single wall plastic tumbler with drinking straw
- Fashionable matching color silicone and straw
  - Eco wood printing drinking lid
- meet FDA , BPA , CPSIA and EU standard



*difference color for selection*



*difference color for selection*

20 oz summer plastic tumbler  
you can taste the cold breverage  
on the whole summer

**UrbanEco**



# Cold brew and Tea Tumbler

**COLD BREW**  
**DP-369**  
 450ml ,16oz

- Double wall plastic tumbler with infuser
- you can taste cold brew or tea on any time
- Double wall construction can keep hot and cold for a while.
- meet FDA , BPA , CPSIA and EU standard



How to use cold brew tumbler



difference printing for selection



16oz Double wall Cold Brew tumbler  
 you can taste the cold brew coffe or tea  
 on any time



Flip open and  
 close drinking lid



Tea  
 difference color for selection



Cold Brew  
 difference color for selection

**UrbanEco**



**VEGA**  
**DP-371**  
450ml ,16oz

- Double wall plastic tumbler
- Flip open and close lid convenience for daily use.
- Double wall construction can keep hot and cold for a while.
- meet FDA , BPA , CPSIA and EU standard

## Double wall plastic tumbler



16oz Double wall plastic tumbler  
you can taste the cold coffe or tea  
on any time



Close for lock tumbler



open for drinking



difference color for selection

**UrbanEco**



## Double wall plastic tumbler

**I AM NOT A PAPER CUP**

**DP-378**

413ml ,14.5oz

- Double wall plastic tumbler.
- Drink thru lid convenience for the daily use.
- Made of BPA Free plastic.
- Double wall construction can keep hot and cold beverage for a while.
- meet FDA , BPA , CPSIA and EU standard.



16.2oz Double wall plastic tumbler  
convenience for the daily use.



difference color for selection



difference color for selection

**UrbanEco**



## Double wall plastic tumbler

### STRAW TUMBLER

DP-381

450ml ,16oz

- Double wall plastic tumbler
- Screw open and close drinking straw lid
- Double wall construction can keep hot and cold for a while.
- meet FDA , BPA , CPSIA and EU standard



difference printing for selection



16oz Double wall plastic tumbler  
you can taste the cold coffe or tea  
on any time



difference color for selection

UrbanEco



**DOLL**  
**DP-393**  
540ml ,18oz

- Double wall plastic tumbler
- Screw open and close drinking straw lid
- Double wall construction can keep hot and cold for a while.
- meet FDA , BPA , CPSIA and EU standard

## Double wall plastic tumbler



difference printing for selection



16oz Double wall plastic tumbler  
you can taste the cold coffe or tea  
on any time



difference printing for selection

**UrbanEco**



**ROMA**  
**TR-350**

420ml ,14oz

*Built-in mister keeps you  
cool whenever you need it*



## 2-In-1 WATER BOTTLE & SPRAY MISTER

**ROMIAS**  
**TR-349**

440ml ,14.5oz

- Single wall plastic (Tritan) Bottle
- BPA free good for health
- Push open and close drinking straw lid
- meet FDA , BPA , CPSIA and EU standard



**BPA**  
**Free**



*difference color for selection*



*difference color for selection*

**UrbanEco**



## Single wall party cup

**LIGHT UP**  
**DP-395**

420ml ,14oz

- Single wall plastic tumbler
- Light up tumbler is good for party and bar use.
- Made of BPA Free plastic
- meet FDA , BPA , CPSIA and EU standard



Light up automatically when pour water in



15oz Sing wall party cup.  
Light up automatically when pouring water  
this is very good for party and bar use



you can heat transfer over the tumbler

**UrbanEco**



## Double wall LED cup



Difference PVC insert for selection



13.8oz Double wall LED tumbler.  
base with LED light  
this is very good for part and bar use



## LED TUMBLER DP-396 380ml ,13.4oz

- Double wall plastic tumbler.
- Light up tumbler this good for party and bar use.
- Made of BPA Free plastic.
- Double wall construction can keep cold beverage for a while.
- meet FDA , BPA , CPSIA and EU standard.



difference color for selection





## Double wall plastic tumbler

**REDUCE**  
**EC-046**  
480ml ,16oz

- Double wall plastic tumbler with recycle paper
- Screw open and close drinking through lid
- Double wall construction can keep hot and cold for a while.
- meet FDA , BPA , CPSIA and EU standard



*difference color for selection*

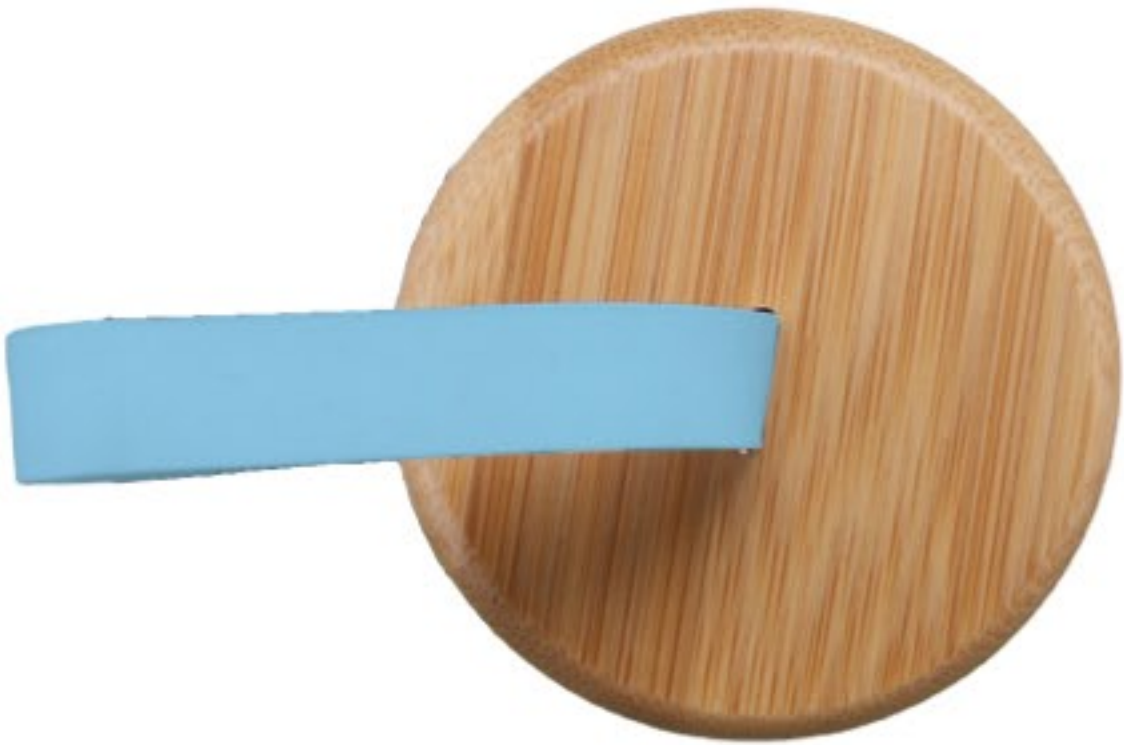
**UrbanEco**



**GBG**  
**GL-118**  
660ml ,22oz

- Single wall biosicone glasses.
- Colorful silicone can prevent breaking.
- Eco bamboo lid with matching color silicone hanger.
- meet FDA , BPA , CPSIA and EU standard.

# Single wall glass bottle



Eco bamboo lid with matching color silicone hanger.



22oz Single wall biosicone glasses.  
matching color silicone



difference color for selection

**UrbanEco**



GL-119 Lid



GL-108 Lid



GL-120 Lid



Difference lid for selection

## Single wall glass bottle



22oz Single wall Borosilicate glass  
matching color silicone

**CHANNEL**  
**GL-119**  
600ml ,20oz

- Single wall Borosilicate glass.
- Colorful silicone can prevent breaking.
- Eco bamboo lid with matching color silicone hanger.
- meet FDA , BPA , CPSIA and EU standard.



difference color for selection

**UrbanEco**



**BLINK**  
GL-121  
380ml ,16oz



*Nice gift box pack*

*single wall construction*



*difference color for selection*

## Double wall glass cup



10oz Double wall biosicone glasses.  
Blink blink stone insert handle.

**BLINK**  
GL-122  
300ml ,10oz

- Double wall biosicone glasses.
- Blink blink stone insert handle.
- Double wall construction can keep hot and cold beverage for a while.
- meet FDA , BPA , CPSIA and EU standard.



*can contain  
all kind of beverage*



*difference color for selection*

**UrbanEco**



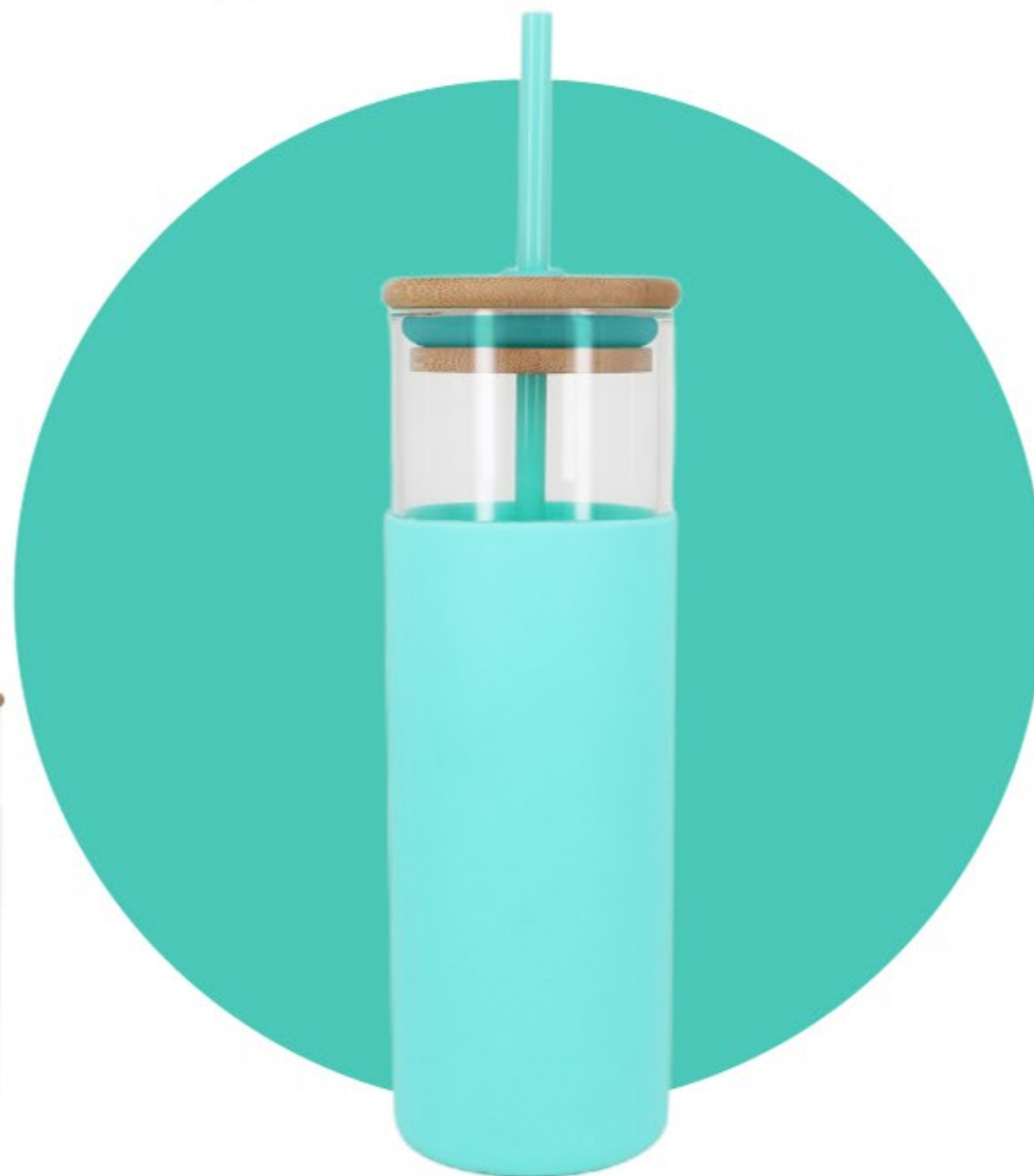
**STRAW**  
**GL-147**  
500ml ,16.7oz

- Single wall Borosilicate glass.
- Colorful silicone easy for holding.
- matching color straw and silicone.
- meet FDA , BPA , CPSIA and EU standard.

## Single wall glass bottle



*difference color for selection*



16.7oz Double wall Borosilicate glass  
matching color silicone



*difference color for selection*



**GLASS**  
**GL-149**  
360ml ,12oz

- Single wall sodalime glass.
- Colorful silicone easy for holding.
- Matching color silicone drink through lid.
- meet FDA , BPA , CPSIA and EU standard.

## Single wall glass bottle



GL-119 Lid

GL-151 Lid



Difference lid for selection



22oz Single wall sodalime glass  
matching color silicone



difference color for selection

**UrbanEco**



**GLASS**  
**GL-150**  
390ml ,13oz

- Double wall borosilicate glass.
- Colorful silicone easy for holding.
- Matching color silicone drinking through lid.
- meet FDA , BPA , CPSIA and EU standard.

## Double wall glass bottle



GL-150 Lid



Difference angle of tumbler



13oz Double wall borosilicate glass  
matching color silicone



difference color for selection

**UrbanEco**



# Single wall Aluminum Bottle

**CLASSIC**

**AB-017**

750ml ,25oz

- Single wall Aluminum bottle
- Light weight and BPA Free liner
- Screw open lid with carbiner clip
- meet FDA , BPA , CPSIA and EU standard



25 oz single wall aluminum bottle,  
Light weight , Easy to recycle,  
Doesn't rust and easy fo carrying.



difference color for selection

**UrbanEco**



# Single wall Aluminum Bottle

**PINO**  
**AB-153**  
700ml ,25oz

- Single wall Aluminum bottle
- Light weight and BPA Free liner
- Easy carrying hanger lid with drinking lid
- meet FDA , BPA , CPSIA and EU standard

Close



Open for drinking



25 oz single wall aluminum bottle,  
Light weight , Easy to recycle,  
Doesn't rust and easy fo carrying.



difference color for selection

**UrbanEco**



# Single wall Aluminum Bottle



**CURUS**  
**AB-157**  
590ml ,20oz

- Single wall Aluminum bottle
- Light weight and BPA Free liner
- Easy carrying hanger lid
- meet FDA , BPA , CPSIA and EU standard



20 oz single wall aluminum bottle,  
Light weight , Easy to recycle,  
Doesn't rust and easy fo carrying.



difference color for selection



difference color for selection

**UrbanEco**



3 Difference lid for youyr selection

## Double wall Ceramic Tumbler

**CERAMIC**  
**CER-131**  
350ml ,11.5oz

- Double wall Ceramic Tumbler with Plastic Lid
- Double wall construction can keep hot and cold
  - 3 difference lid more option for customer
  - can print 4 color logo and patterent
  - meet FDA , BPA , CPSIA and EU standard



A Lid

close



open



close



B Lid



open



C Lid



open



close



11.5 oz Double wall ceramic tumbler  
can use all the day for your  
daily coffee and breverage



difference color for selection

**UrbanEco**





*difference color for selection*

**BPA  
Free**



## Single wall plastic bottle



23.6 oz, single wall plastic (Tritan) Bottle

**ANEBODA**  
**TR-177**  
670ml ,23.6oz

- Single wall plastic (Tritan) Bottle
- BPA free good for health
- Flip open and close lid
- meet FDA , BPA , CPSIA and EU standard



*difference color for selection*

**UrbanEco**





difference color for selection



**BPA  
Free**



## Single wall plastic bottle



22 oz, single wall plastic (Tritan) Bottle

**EMBLEM**  
**TR-307**  
650ml ,22oz

- Single wall plastic (Tritan) Bottle
- BPA free good for health
- Screw open and close cork top lid
- meet FDA , BPA , CPSIA and EU standard



difference color for selection

**UrbanEco**



## Single wall plastic bottle



difference color for selection



**BPA  
Free**



24 oz, single wall plastic (Tritan) Bottle

**CHLOE**  
**TR-311**  
720ml ,24oz

- Single wall plastic (Tritan) Bottle
- BPA free good for health
- Screw open and close drinking lid
- meet FDA , BPA , CPSIA and EU standard



difference color for selection

**UrbanEco**





**BPA  
Free**



## Single wall plastic bottle

**YUKA**  
**TR-315**  
780ml ,26oz

- Single wall plastic (Tritan) Bottle
- BPA free good for health
- Screw open and close drinking lid
- meet FDA , BPA , CPSIA and EU standard



*difference color for selection*



26 oz, single wall plastic (Tritan) Bottle



*difference color for selection*

**UrbanEco**



# Single wall plastic bottle

**POLO**  
**TR-316**  
780ml ,26oz

- Single wall plastic (Tritan) Bottle
- BPA free good for health
- Flip open and close drinking straw
- meet FDA , BPA , CPSIA and EU standard



26 oz, single wall plastic (Tritan) Bottle



difference color for selection

**UrbanEco**

**BPA**  
**Free**



difference color for selection



**BPA  
Free**



## Single wall plastic bottle

**EEN**  
**TR-317**  
780ml ,26oz

- Single wall plastic (Tritan) Bottle
- BPA free good for health
- Pop up open and close lid
- meet FDA , BPA , CPSIA and EU standard



*difference color for selection*



26 oz, single wall plastic (Tritan) Bottle



*difference color for selection*

**UrbanEco**





difference color for selection

## Single wall plastic bottle



23 oz, single wall plastic (Tritan) Bottle



Lid with silicone hanger

**HUGO**  
**TR-330**  
700ml ,23oz

- Single wall plastic (Tritan) Bottle
- BPA free good for health
- screw open and close hidden silicone lid
- meet FDA , BPA , CPSIA and EU standard



difference color for selection

**BPA**  
**Free**



**UrbanEco**



close hanger silicone

easy open hanger for daily carrying



## Single wall plastic bottle

**CYLIN**  
**TR-331**  
600ml ,20oz

- Single wall plastic (Tritan) Bottle
- BPA free good for health
- screw open and close leak-proof lid
- meet FDA , BPA , CPSIA and EU standard



20 oz, single wall plastic (Tritan) Bottle

**BPA**  
**Free**



difference color for selection



difference color for selection

**UrbanEco**





## Single wall plastic bottle

**SILM**  
**TR-344**  
450ml ,15oz

- Single wall plastic (Tritan) Bottle
- BPA free good for health
- Open and close drinking straw lid
- meet FDA , BPA , CPSIA and EU standard



15oz Double wall stainless steel  
on the go drinking bottle



difference color for selection

**UrbanEco**



**ROMA**  
**TR-350**

420ml ,14oz



**BPA**  
**Free**



*difference color for selection*

## *Single wall plastic bottle*



14 oz, single wall plastic (Tritan) Bottle

**ROMIAS**  
**TR-349**

440ml ,14.5oz

- Single wall plastic (Tritan) Bottle
- BPA free good for health
- Push open and close drinking straw lid
- meet FDA , BPA , CPSIA and EU standard



*difference color for selection*

**UrbanEco**



## Stainless Straw set



Reusable stainless straw  
easy for daily outdoor use

## STAINLESS STRAW SET SC-046



UrbanEco



**SILICONE STRAW SET**  
**SC-067**

*Silicone Straw with box pack*



Resuable silicone straw  
box with carabiner easy for daily outdoor use

**UrbanEco**



**STAINLESS STRAW SET**  
**SC-068**

*Stainless Straw with box pack*



Reusable stainless straw  
box with carbiner easy for daily outdoor use

**UrbanEco**



## Stainless Straw set

**STAINLESS STRAW SET**  
SC-070



Reusable stainless straw  
easy for daily outdoor use



**UrbanEco**



## Silicone bottle carrier



Size : 3.3cm for the inner size  
Can fit most of the bottle

